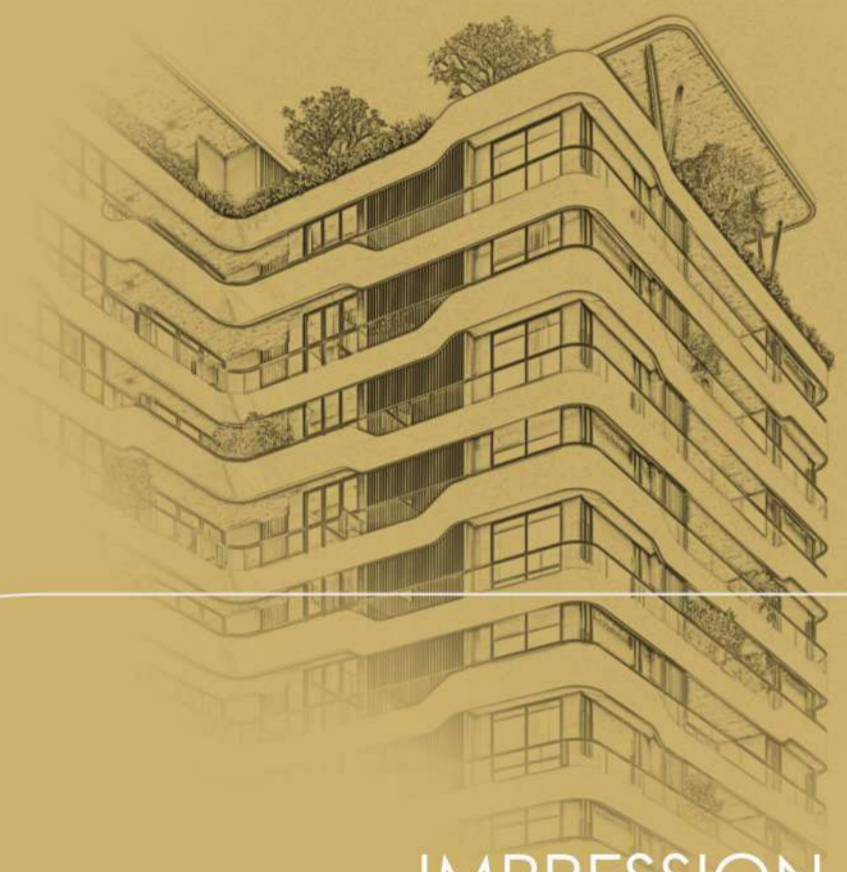


impression

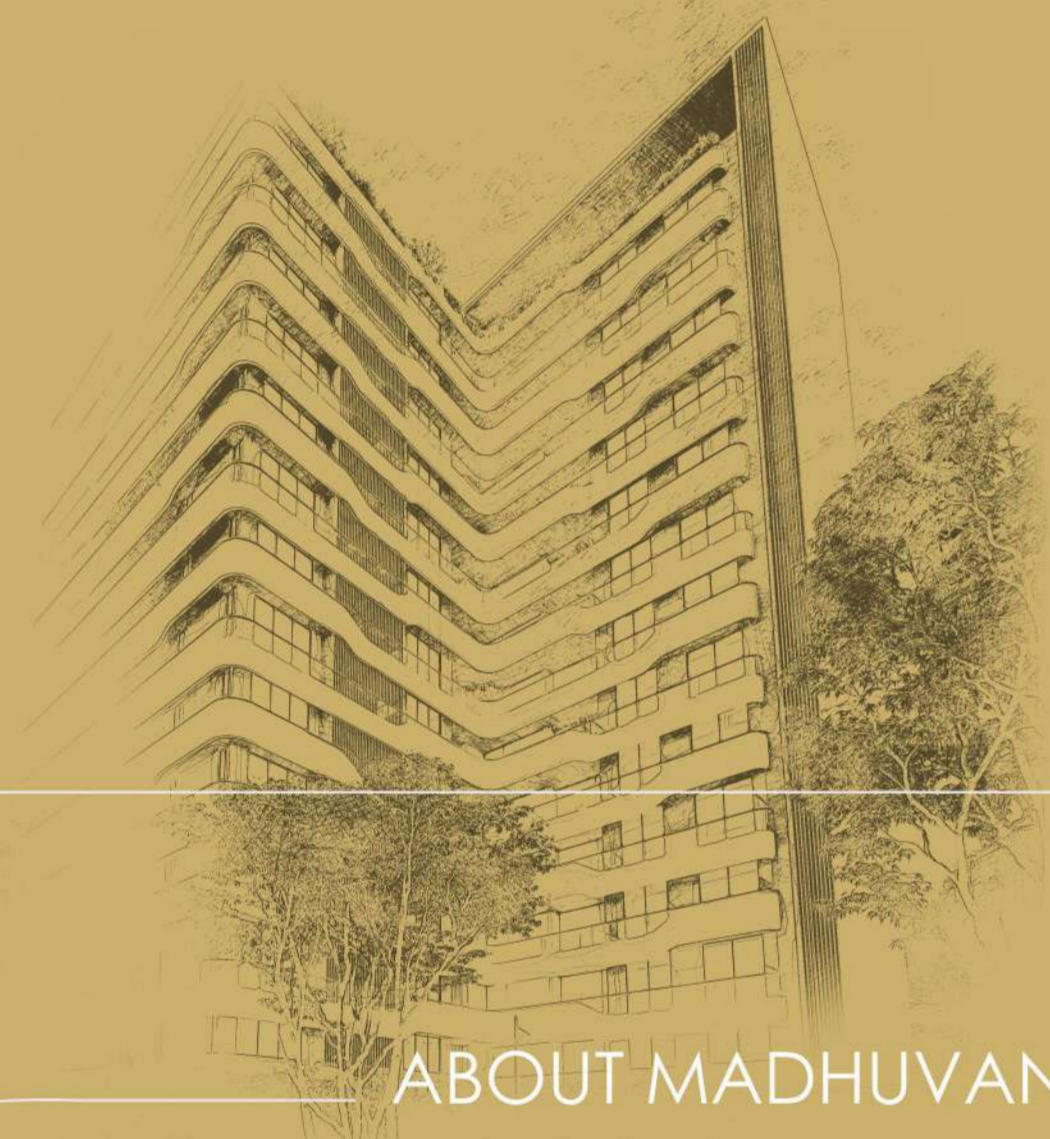


IMPRESSION OF STATURE...

It's designed amidst 65% of open spaces to provide you with a sense of freshness and freedom that you aspire for.


madhuvan
impression

4
— BHK —
MODERN LIVING

ABOUT MADHUVAN GROUP...



DEVELOPING LIFESTYLE

Madhuvan Group is one of Vadodara's most Premium Real Estate Developers. With more than Two Decades of experience in Real Estate we are unstoppable in our endeavor to build a Dream Life for thousands of Families. Each of our projects is a realized dream of Superior Life Style and Supreme Experiences.

Madhuvan Group is known for its Innovative Concepts, Incomparable Quality and Exceptional Service. With a stellar Repute, Unique Designs and Unwavering Trust of our Customers Madhuvan Group has successfully left Impressive Footprint in Vadodara.



ABOUT ARCHITECT POINT OF VIEW...



Madhuvan Impression is a community apartments project, that observe three individual towers, connected with the passages and circulation bays. Projected as a monolithic structure, these towers have straight lines in the facades connecting the three towers with an undulated edging designed to break the monotony.

The approach road lies on the South side, and the layout is designed in way that offers East facing houses for optimum day-light, and a clear open path for the south-west wind giving ample cross-ventilation. The ground floor is developed as various landscaped garden spaces, pool, children play area, whereas the terrace planning offers rejuvenation areas for an elite lifestyle.



uneven.in



MADHUVAN
IMPRESSION

BUS STOP



Spacious Balcony
To Most Spaces



65% Open Campus



@ 45 Terrace Amenities
MTR.

IMPRESSION OF BRIGHT HOME...

Nobody counts the number of struggle you do they remember the good impression you make when you have a bright home.



04 Side Open All Side
Secured



39 Limited Homes
Unlimited Possibilities



13 Storeys Many Stories

impression *of life*



39

LUXURIOUS AMENITIES

IMPRESSIONS OF FASCINATION

Stylishly designed. Delightfully priced. Here is one place that speaks your language. Thoughtfully conceived, Madhuvan Impression is a high-rise residential complex that blends modern conveniences and amenities with an enriching lifestyle. you Celebrate life's countless memorable moments only here.

INDOOR AMENITIES

 Spa Room

 GYM

 Multipurpose Hall

 Home Theater

 Lounge

 Zumba Zone

 Table Tennis Room

 Yoga Zone

 Intercom Facility from Security to Apartment

 Sauna & Steam

 Library

 Cafeteria

 Game Room

OUTDOOR AMENITIES

 Kids Pool

 Barbeque Area

 Lush Green Landscape Garden

 Gazebo

 Garbage Collection Zone

 Terrace Garden

 Swimming Pool With Deck

 Kids Play Area

 Rain Shower

 Box Cricket

 Pickup & Drop-off Zone

 Rain Water Harvesting

 Reception Area

 Sr. Citizen Sitout

OTHER AMENITIES

• Wi-Fi Zone

• Driver Room

• 24 Hours Water Supply

• Water Softener Plant

• Society Office

• Provision of EV Charging Point

• Power Back Up in Common Area

• 3 Lift in One Tower

• 24x7 CCTV Surveillance & Security

• Boom Barrier

• Provision of Heatpump

• Provision Mechanical Parking



EXPERIENCE NEWER HEIGHTS OF
OPEN LUXURY...









madhuvan
impression

IMPRESSION OF LOCATION...

A well planned residential project that is conveniently situated in close proximity to schools, stores, shopping malls, and other necessary facilities.







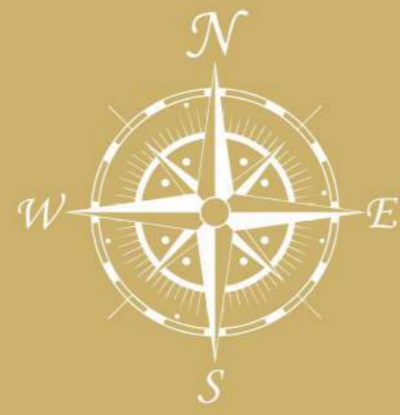
HALL

MADHUVAN IMPERIAL

GROUND FLOOR PLAN



1ST TO 13TH
FLOOR PLAN



4 BHK
UNIT PLAN

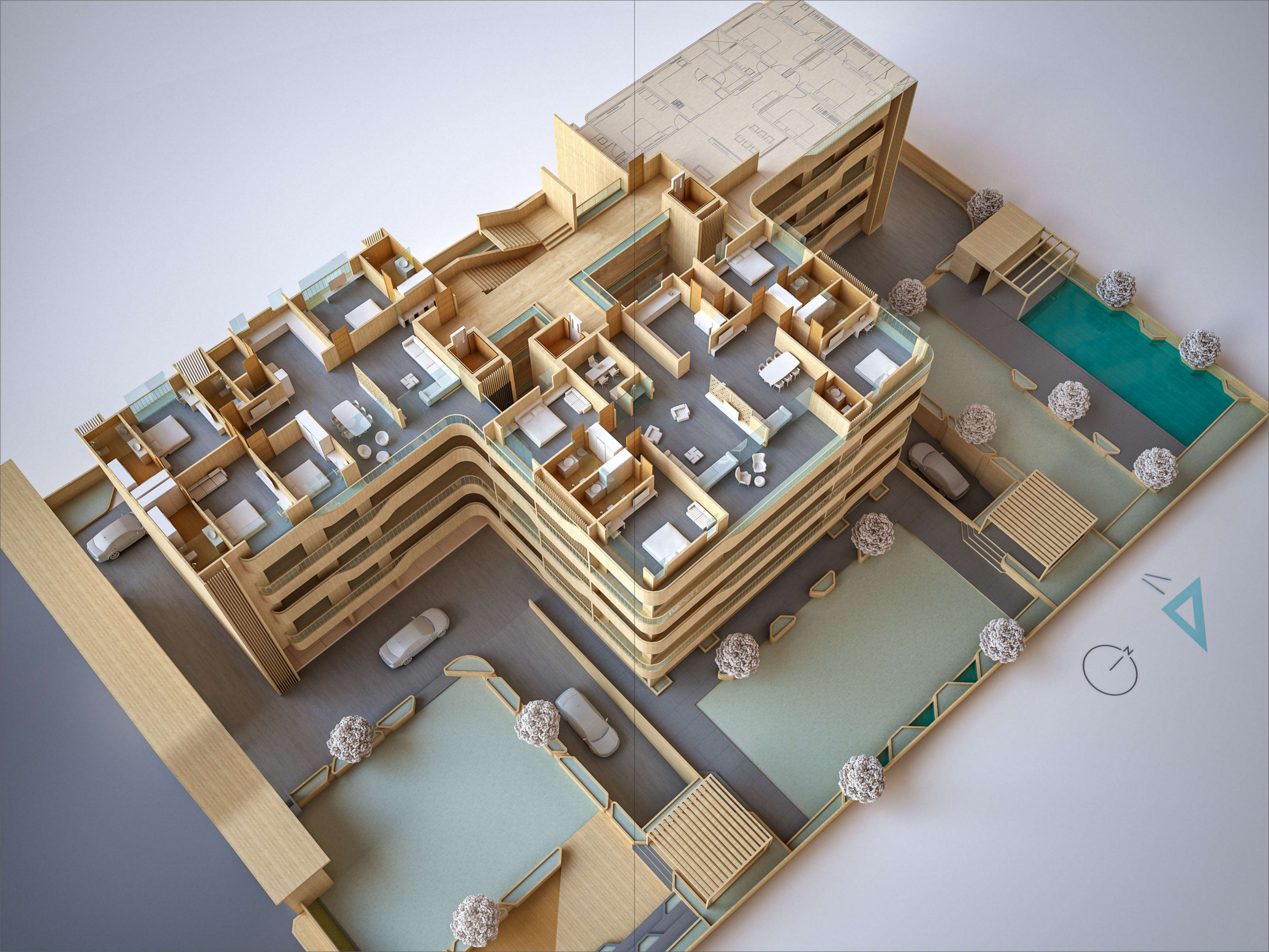
102



4 BHK
UNIT PLAN

101 & 103



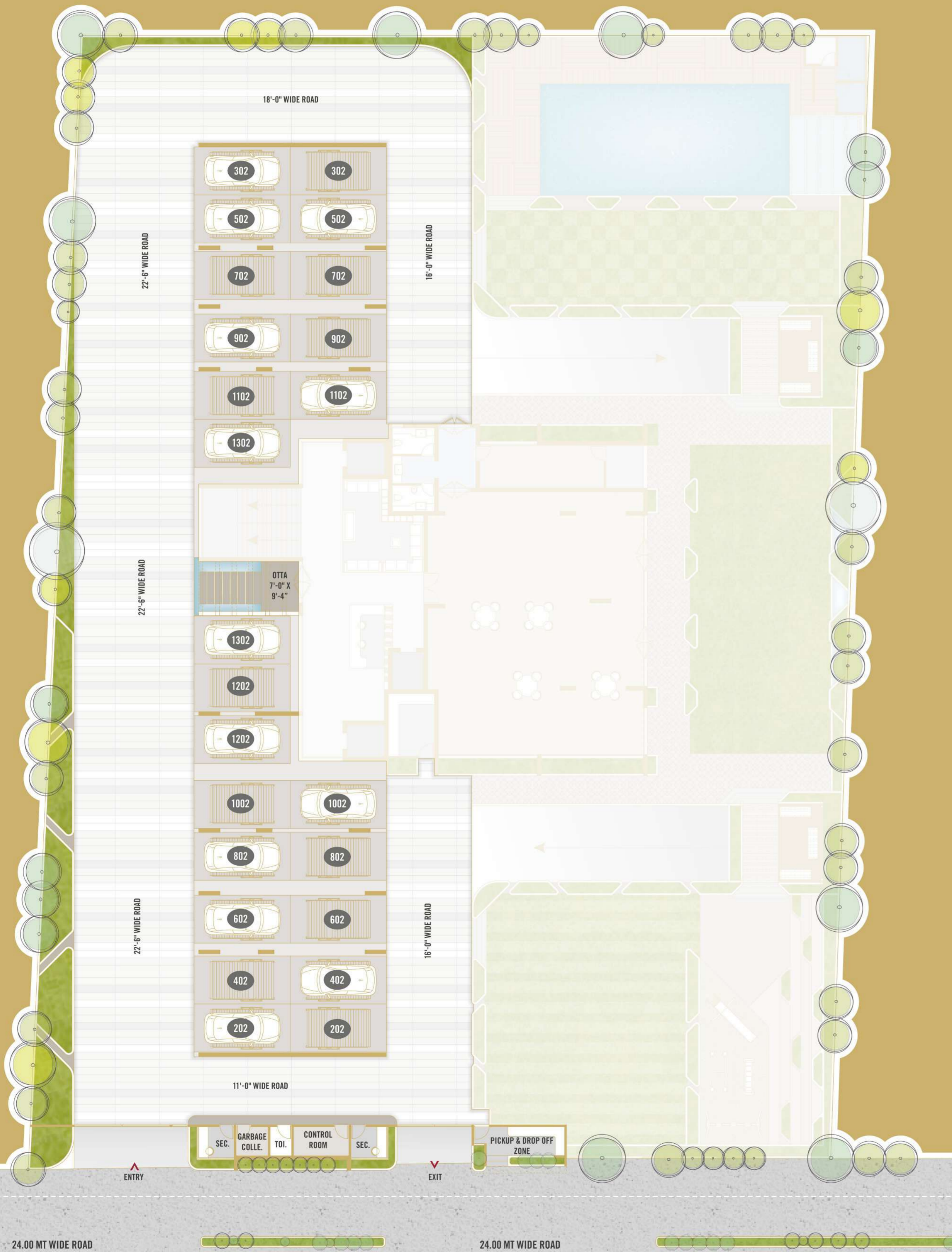




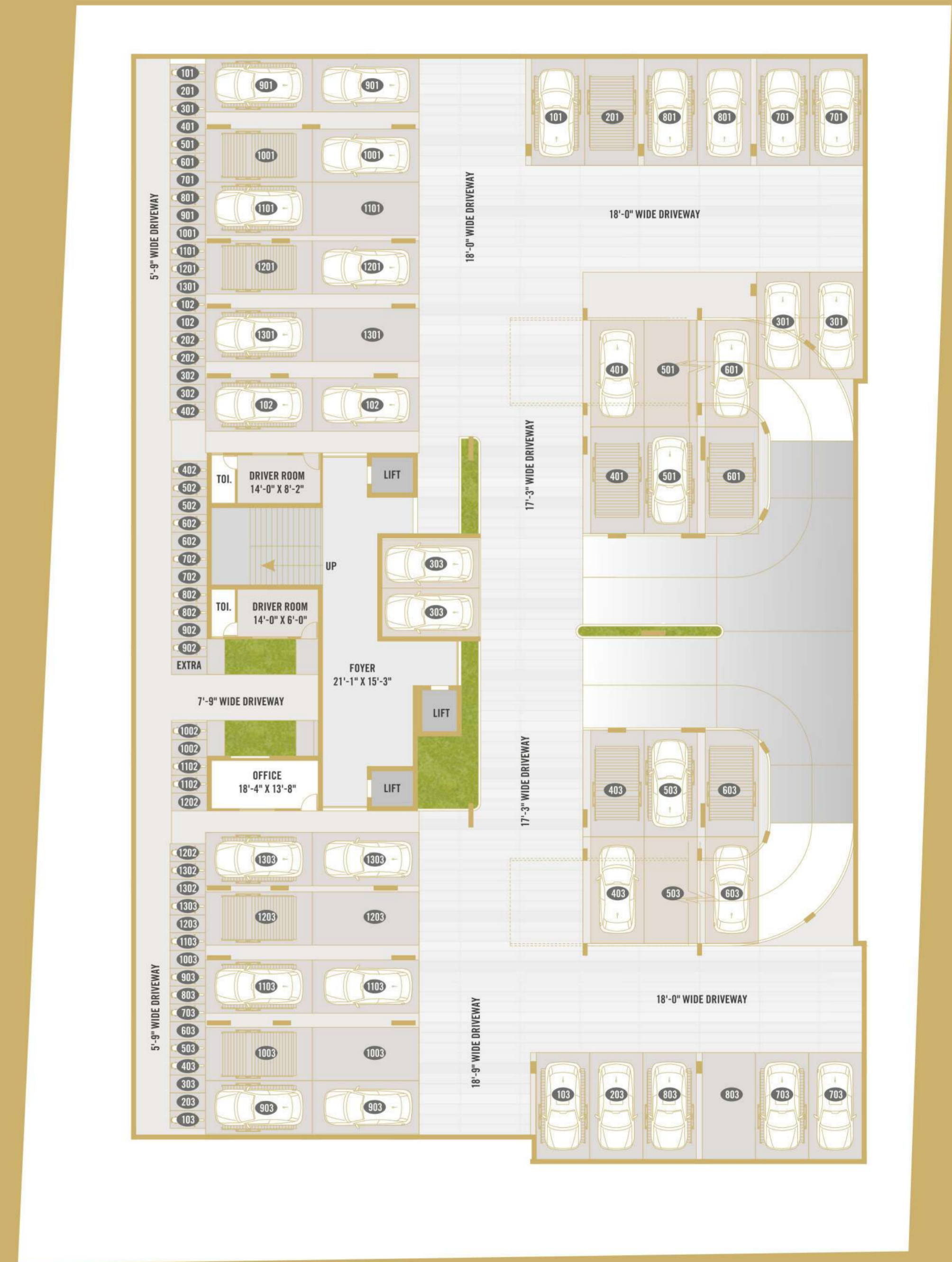
TERRACE
PLAN



GROUND FLOOR PARKING PLAN



BASEMENT PLAN



PREMIUM SPECIFICATIONS

STRUCTURE



- **Shell** : Earth Quake Resistance RCC Frame Structure With Masonary Partition.
- **Steel & Concrete** : Superior Quality Steel Reinforcement With High Quality Ready Mix Concrete Using Leading Brands.
- **Masonry** : High Quality Block Masonry Work. Internal Wall With Mala Plaster (Except Ceiling) And External Wall With Double Coat Plaster.

FLOORING & DADO



- **Common Area** : Lift, Lobby Wall & Floor Using Vitrified Slabs As Per The Architect's Design. Premium False Ceiling In All Lift Lobbies.
- **Car Park Area** : Trimix Concrete Flooring At Ground Level And Basement.
- **Staircases** : Granite Flooring With Hand Railing Using Stainless Steel Balustrades.
- **Apartment Area** : GVT Italian Color Tiles In Entire Apartment.
- **Toilets** : Vitrified GVT Tiles To Lintel Level On Wall And Floor With Anti-slip Tiles.
- **Kitchen** : Designer Ceramic Tile Dedo Above Platform.
- **Washing Machine, Dryer And Dishwasher Point** : One Cold Water Inlet And Drainage Outlet For A Washing Machine Shall Be Provided In The Utility. Provision For Dryer And Dishwasher In Work Area.

BATHROOM



- High Quality Branded CP Fitting & Sanitary.
- Flush Tanks Which Conserve Water.
- Connected Diverter For Hot & Cold Water For Washbasin And Shower.
- **Cockroach Traps** : A Detachable Stainless Steel Cockroach Trap Bid Shall Be Provided In All Bathrooms.
- Porcelain Wash Basins Shall Be Provided In All Bathrooms With Stone Counter Tops For Basin.

PLUMBING



- All Water Supply Lines Shall Be ISI Marked CPVC Pipes. Drainage Lines & Storm Water Drain Pipes Shall Be In PVC.
- Provision Of Hot Water Heat Pump For Individual Apartment.

LANDSCAPE



- Designer Landscaping, Paved Driveways, Lightings Etc.
- **Balconies** : Rustic / Antiskid / Ceramic Tiles. All Balconies With Glass Railings And Handles.

ELECTRICAL



- Concealed Copper Wiring With Modular Plate Switches, Universal 5 AMP And 15 AMP Power Plugs.
- Adequate ELCB And MCB Shall Be Provided In Each Apartment.

DOORS & WINDOWS



- **Main Door** : High Quality Wooden Frame Door With Veneer Panelling And Flush Door With Both Side Decorative Veneer.
- **Internal Doors** : Stone Frame And Flush Doors With Both Side Decorative Laminates.
- **Lock** : Main Door Lock With Handle And Video Door Bell. All Bedrooms With Cylindrical Locks.
- **Windows** : Aluminium Or UPVC Sliding Windows.

ELEVATORS



- High Speed 8 Passengers Lifts With ARD & Automatic Doors.

KITCHEN



- Natural / Artifical Premium Stone Sandwiched Platform With Single Bowl Sink With Drain Board.

WALL FINISH



- **Wall Treatment** : Internal Walls - Finish With Primer And Putty. Service Area With Premium Emulsion. External Walls - Weather Shield Exterior Paint With Texture Finish.

OTHERS

- CCTV Surveillance In Common Areas.
- Generator Power Backup For Common Facilities.
- Provision For Exhaust Fans In All Bathrooms.
- Intercom Facility From Security Cabin To Each Flat.
- 24 Hours Security. Security Cabin Painted With Textured Paint.
- Automatic Gate.
- Advanced Fire Fighting System On Ground And Basement.
- Main Lobby - Air - Conditioned With Seating. Well - designed Interiors With False Ceiling & Decorative Lights.

PAYMENT CONDITION

05% Booking Amount | 25% Within 15 Days Of Agreement To Sell | 10% Plinth Level | 10% 2nd slab | 10% 4th slab | 10% 7th slab | 10% 10th slab | 10% 13th slab | 05% Plaster Level | 05% At The Time Of Agreement (Dastavej)



SCAN FOR LOCATION



www.madhuvanimpression.com

PROJECT BY :

madhuvan
 GROUP
 DEVELOPING LIFESTYLE



SITE FULL ADDRESS :
 Madhuvan Impression, 30 mtr. Sevasi - Bhaiji Canal Road,
 Nr. Red petal Party Plot, Sevasi, Vadodara - 391101.

CONTACT : 95 123456 12 | 9909 804 804

Rera No. : PR/GJ/VADODARA/VADODARA/Others/RAA10755/101022
www.gujrera.gujarat.gov.in

Print & Production By
www.scarletindia.com | +91 98250 84676

ARCHITECT :



STRUCTURE CONS. :



MEP :



Developers reserve the rights for alteration of specification and design. All dimensions / area are approximate, average & subject to variations. Irregular payments shall cause cancellation of booking. VMC, electricity, legal expenses, GST & other GOVT charges, stamp duty & registration, maintenance charges & meter charges shall be borne by the members. This brochure is not to be treated as part of the legal document, it is for the easy presentation of the project.

Disclaimer : the details, facts, specifications, figures mentioned in brochure are indicative for information purpose only and are subject to modifications/compliance required as per RERA act.



madhuvan
impression

People who embrace change, people who always take the road less travelled. Yes, people like you, Madhuvan Impression is for you...

